



TAYLOR HOWES

LONDON



COLLECTION | "LOVE AT DUSK" 2018

SONNET BENCH

A contemporary yet timeless tribute to the 'Love Seat', the design is upholstered in a tailored silk-weave fabric with hand piping to enhance the silhouette. The striking solid brushed brass and bronze frame is finished with an elegant studded detail.

SPECIFICATIONS

Brass frame, solid hardwood frame, sprung seat.

FABRIC

Upholstered in Taylor Howes fabric

COM: Body 2.7m, Bolsters 1m (plain fabric)

FINISHES

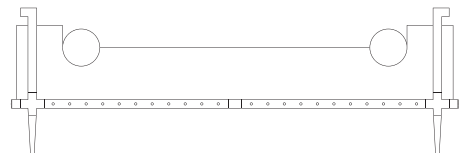
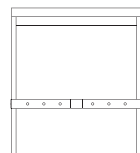
Brushed brass and bronze

DIMENSIONS

W180xH59xD52cm

Seat height 45 cm

Overall dimensions including studs W181 cm x D53cm



LEAD TIME

8 - 10 Weeks + shipping

PRODUCT CODE

U1803



49 - 51 CHEVAL PLACE, KNIGHTSBRIDGE, LONDON, SW7 1EW

+44 (0) 207 349 6620 | TAYLORHOWES.CO.UK

© ALL DESIGNS ARE PROTECTED BY COPYRIGHT LAWS OF THE UNITED KINGDOM AND EUROPE.